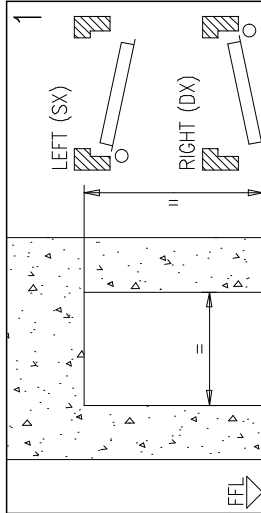


INSTALLATION HANDBOOK, APPLICATION AND MAINTENANCE FOR FIRE DOORS UNIVER REI 60 AND REI 120 SINGLE-LEAF DOORS

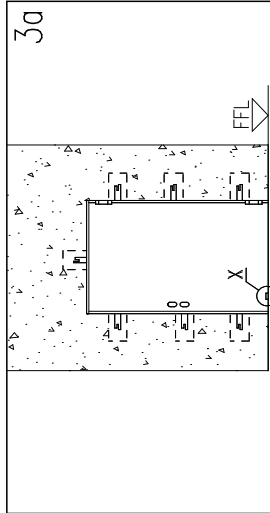
I51 – GB

5010001/2 – 06/06

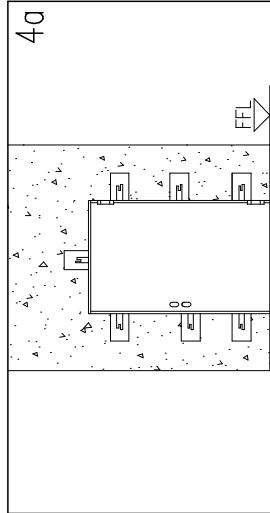


Unpack the door and verify the correspondence between the wall opening and the dimension printed on the coloured sticker applied on the frame. Establish the Finished Floor Level (FFL) and the opening direction.

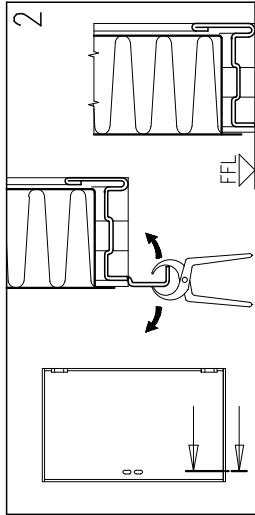
WITH BRACKETS



Bend up the frame-brackets and mark on the wall their positions respecting the FFL level. Create the holes in the wall for the brackets. Insert a spacer of 1 cm under the leaf of doors with wall opening L=1350 (X).

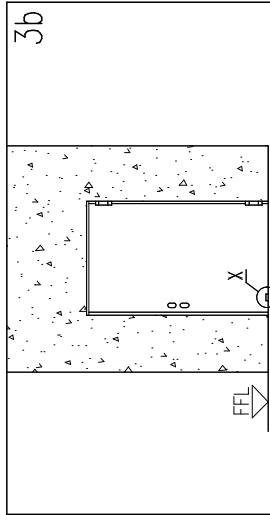


Fasten temporarily the door in the wall opening respecting the plumb-line, the FFL level and the parallelism to the wall.

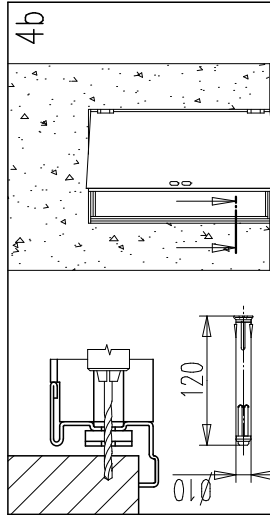


Detach with caution the sill distancer from the frame to prepare door installation at finished floor level (FFL).

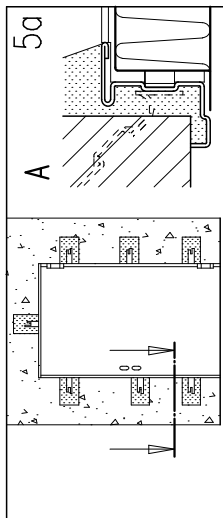
WITH EXPANSION SCREWS



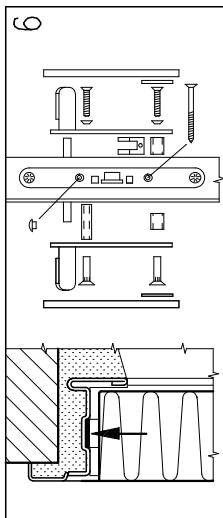
Fasten temporarily the door in the wall opening respecting the plumb-line, the FFL level and the parallelism to the wall. Insert a spacer of 1 cm under the leaf of doors with wall opening L=1350 (X).



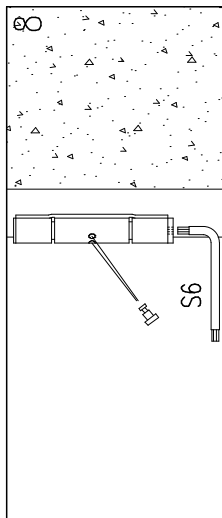
Open the door-leaf and fix the frame at each bracket position with expansion screws type Würth art._09.10.210.112. Close again the door-leaf.



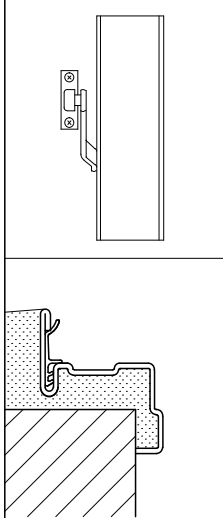
Fix the brackets with fast grip cement. Fill up the space between frame and wall with mortar without curving frame.



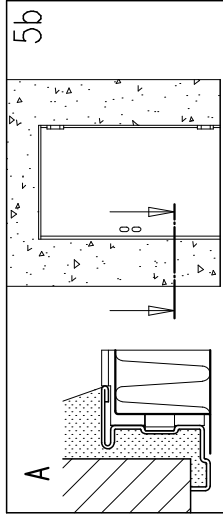
Remove spacers between frame and leaf, install handle and glue the self expanding gasket on to the top part of frame.



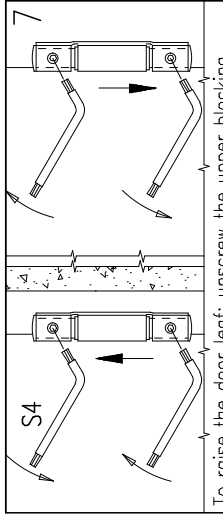
Wind up the spring hinge in the opening direction inserting the tension pin. Even if self closing is not needed or overhead doorclosers are installed, wind up the hinge spring anyway blocking it with the tension pin.



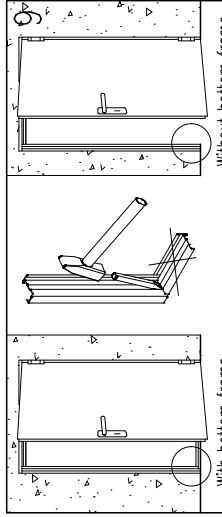
Optional: rubber gasket – overhead doorcloser (the spring must be anyhow slightly loaded) – antipanic bar TWST – antipanic bar SLASH.



Fill up the space between frame and wall with mortar (detail A) without curving frame.



To raise the door leaf: unscrew the upper blocking screw, screw on the lower one, screw on the upper one again. To lower the door leaf: unscrew the lower blocking screw, screw on the upper one. Operation to be carried out with the max. care with the aid of a lever.



In case the bottom threshold is not needed cut it with a chisel. Univer door is government approval with or without the bottom frame.

INSTALLATION HANDBOOK, APPLICATION AND MAINTENANCE FOR FIRE DOORS UNIVER REI 60 AND REI 120 SINGLE-LEAF DOORS

15.1-06B

GENERAL NOTES

STANDARD: the assemble instructions have to be followed in every detail to respect the test conditions and assure the perfect functioning of the door, including the self-closing. Furthermore a regular service according to Decree 10th March 1998 is necessary.

LIABILITY: It is duty of the installer to follow the installation instructions in any detail, specifically point 7 and 8, in order to guarantee the safety of the end-users.

CEMENT WORKS: minimum partition thickness mm 150. It is duty of the client to prepare the partition so that no loss of mechanical qualities will occur, to fill up the frames of the fire doors with cement mortar and to carry out the cement works as prescribed in this assemble instruction (detail A).

FINISHINGS: the serial door is finished with an epoxy-polyester powder paint oven-baked at 180° C. The surface is offered and particularly resistant. In case an additional paint is desired we advise to follow these instructions:
- make smooth the surfaces with sandpaper and dust them
- give a first hand of opaque 2 components epoxide using the product ALCEA EPOX 5203 / 0059 (beige)
- finish the surfaces with enamels or paints to your choice.

CLEANING: the doors are supplied from the factory clean and packed. We suggest to use a clothe and soaped water only. Do not scratch the surfaces.

WARRANTY: the manufacturer gives warranty as per Italian law (C.C.1495). Any claim for missing or damaged goods have to be recorded by inserting a written remark in the delivery notes and must be notified the maximum within eight days from the date of materials receipt.

MAINTENANCE INSTRUCTIONS FOR UNIVER DOORSETS

All fire resistant doorsets need regular maintenance in order to verify that no damage occurred and that they close regularly. The scheduled maintenance shall guarantee that the leaf swings correctly and that the self-closing mechanism works properly. The doors shall be kept free from any obstructions. Doors must be kept free from obstructions (law 19.09.1994, No. 626, M.D. 10.03.1998).

Any 5.000 opening cycles but at least every 6 months the following operations shall be carried out:
Lubricating the ball-bearing hinge.

Lubricating the spring hinge and the spring after removing the tension pin.

Wind up the spring inserting the tension pin. Verify that the closing force is sufficient to shut the door if opened to 45°.

Lubricating the lock and the latch.

For double leaf doorsets additional controls shall be carried out:

Verify the functionality of the secondary leaf's rods and lubricate its guide rail.

Clean the hole of the floor catch set.

Lubricate the lock and the rod blocking device (top).

Verify the regular functionality of the closing regulator (arm position perpendicular to the main leaf).

Lubricate the mobile parts of the closing regulator.

Verify the regular functionality of the doorsets accessories (handle, antipanic bar, overhead doorcloser etc.).

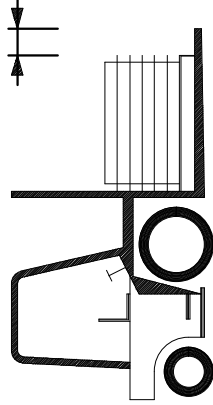
Their mobile parts shall be lubricated, too.

In case of irregular functioning of the doorset or its accessories contact an authorized installer or replace the damaged accessories.

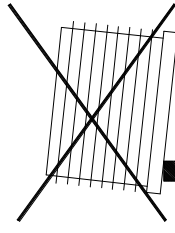
N.B. For lubrication use viscous products.

STORAGE INSTRUCTIONS:

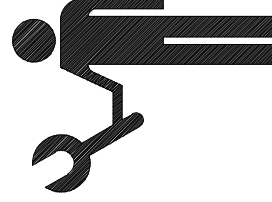
It is duty of the company/person taking over the goods to store them in a suitable place so that they will be protected from the natural agents and from the direct sun rays. If during transportation or truck unloading it rains or snows on the goods it is necessary to remove immediately the nylon film from each leaf and frame, put the goods in vertical position to dry them appropriately. In case of external visible defects on doors, they have to be marked in the copy of the transportation document to be returned to the forwarder and notified to the manufacturer by registered mail within 48 hours. We remember that according to our general conditions intrinsic defects have to be notified to the manufacturer within 8 days from the delivery date by registered mail. Goods with defects never have to be utilised or assembled, they should be stored at disposal for controls by the manufacturer appointed person.



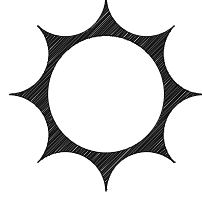
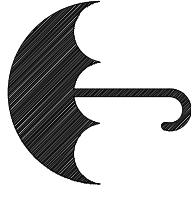
Move the materials with appropriate means.



Store and handle the materials with care.



Assemble by qualified staff only.



Do not expose the materials to the natural agents.