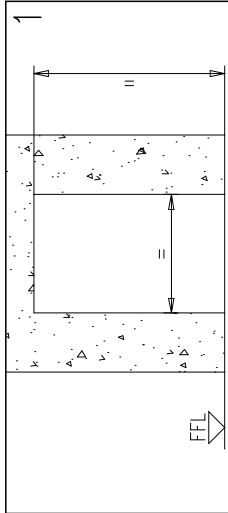


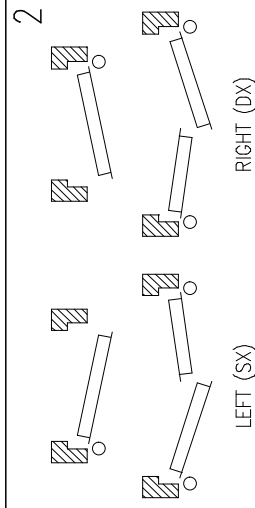
INSTALLATION HANDBOOK, APPLICATION AND MAINTENANCE OF PROGET REI 60, REI 120 AND MULTIPURPOSE DOORS

152-GB

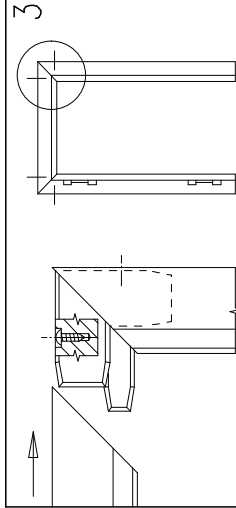
5010002/2 - 05/06



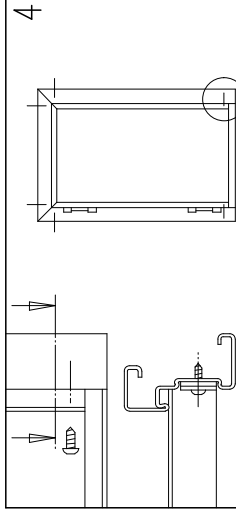
Unpack the door and verify the correspondence between the wall opening and the dimension printed on the coloured sticker applied on the frame. Establish the Finished Floor Level (FFL).



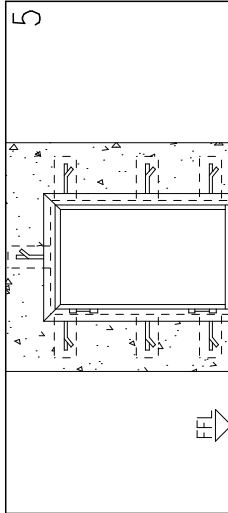
Verify the opening direction of the door.



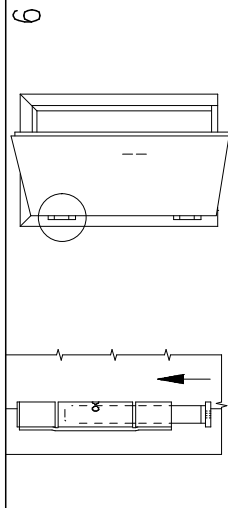
Set together the frame profiles with black joints; unfasten the screws present in the joints so that they enter the holes on frames until the connections get rigid.



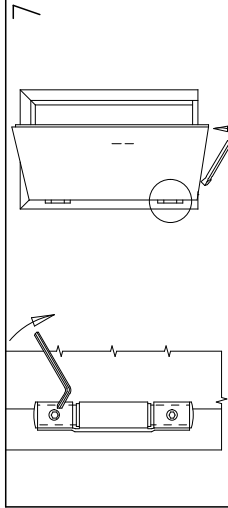
Unfasten the screws at the bottom part of the two jambs and fix them again inserting the jamb distancer, without removing the self-expanding gasket.



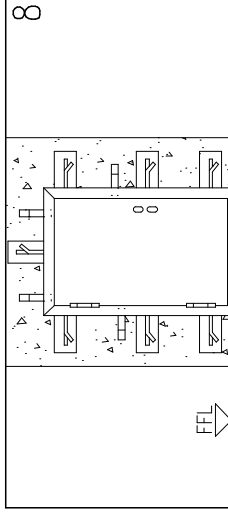
Bend up the frame-brackets and mark on the wall their positions respecting the FFL level. Create the holes in the wall for the brackets.



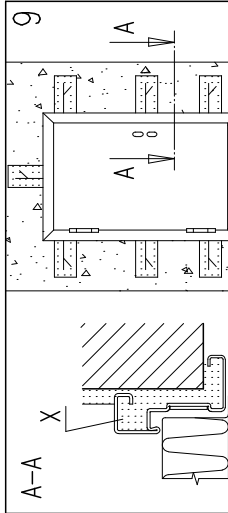
Unpack door leaf without removing distancers and wedges of PA. Place it in the frame inserting pivot with spring in upper hinge on left doors and in lower on right doors.



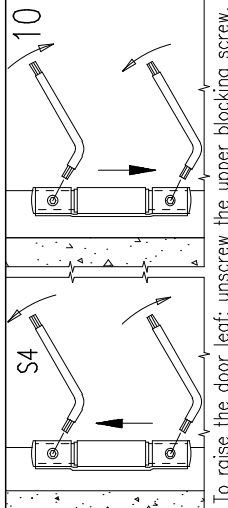
Bring the main hinge bearings in contact with each other through the use of the screw thread. Operation to be carried out with the maximum care with the aid of a lever.



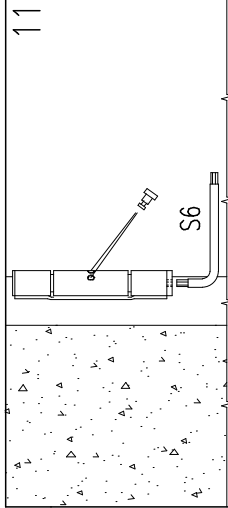
Fasten temporarily the door in the wall opening respecting the plumb-line, the FFL level and the parallelism to the wall.



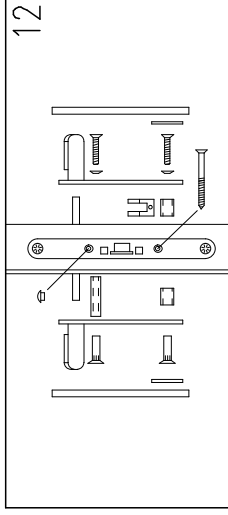
Fix the brackets with fast grip cement. Fill up the space between frame and wall with mortar (detail X) without curving frame.



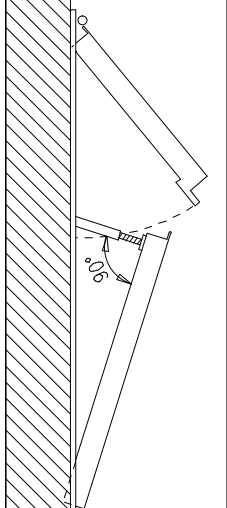
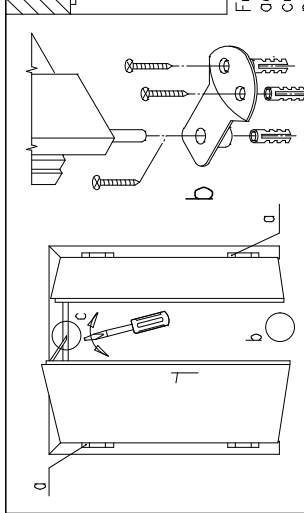
To raise the door leaf: unscrew the upper blocking screw, screw on the lower one, screw on the upper one again. To lower the door leaf: unscrew the lower blocking screw, screw on the upper one. Operation to be carried out with the maximum care with the aid of a lever.



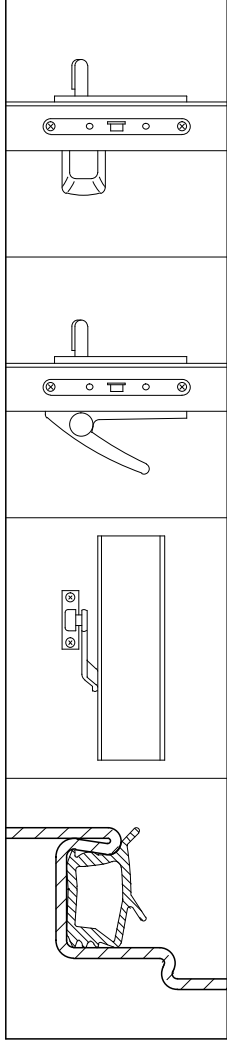
Wind up the spring hinge in the opening direction inserting the tension pin. Even if self-closing is not needed or overhead doorclosers are installed, wind up the hinge spring anyway blocking it with the tension pin.



Remove the spacers between frame and leaf and assemble the handle. Remove the lower spacer. Remove the coloured sticker from the frame by means of hot air.



For double leaf doors use the same assemble procedure adding: a) Load two pivot with springs - b) Install the catch set in the floor - c) Regulate the sequencer (arm position perpendicular to the main leaf).



Optionals: rubber gasket - overhead doorcloser (the spring must be anyhow slightly loaded) - antipanic bar TWST - antipanic bar SLASH

GENERAL NOTES

STANDARD: The assemble instructions have to be followed in every detail to respect the test conditions and assure the perfect functioning of the door, including the self-closing. Furthermore a regular service according to Decree 10th March 1998 is necessary. MULTIPURPOSE doors are not fitted with thermally expanding seals and closing regulators.

LIABILITY: It is duty of the installer to follow the installation instructions in any detail, specifically point 7, 10 and 11, in order to guarantee the safety of the end-users.

CEMENT WORKS: Minimum partition thickness mm. 150. It is duty of the client to prepare the partition so that no loss of mechanical qualities will occur, to fill up the frames of the fire doors with cement mortar and to carry out the cement works as prescribed in this assemble instruction (detail A-A).

FINISHINGS: The serial door is finished with an epoxy-polyester powder paint oven-baked at 180° C. The surface is goffered and particularly resistant. In case an additional paint is desired we advise to follow these instructions:
 - make smooth the surfaces with sandpaper and dust them
 - give a first hand of opaque 2 components epoxide using the product ALCEA EPOX 5203 / 0059 (beige)
 - finish the surfaces with enamels or paints to your choice.

CLEANING: The doors are supplied from the factory clean and packed. We suggest to use a clothe and soaped water only. Do not scratch the surfaces.

WARRANTY: The manufacturer gives warranty as per Italian law (C.C.1495). Any claim for missing or damaged goods have to be recorded by inserting a written remark in the delivery notes and must be notified the maximum within eight days from the date of materials receipt.

MAINTENANCE INSTRUCTIONS FOR PROGET DOORSETS

All fire resistant doorsets need regular maintenance in order to verify that no damage occurred and that they close regularly. The scheduled maintenance shall guarantee that the leaf swings correctly and that the self-closing mechanism works properly. The doors shall be kept free from any obstructions. Doors must be kept free from obstructions (law 19.09.1994, No. 626, M.D. 10.03.1998).

Any 5.000 opening cycles but at least every 6 months the following operations shall be carried out:
 Lubricating the ball-bearing hinge.
 Lubricating the spring hinge and the spring after removing the tension pin.
 Wind up the spring inserting the tension pin. Verify that the closing force is sufficient to shut the door if opened to 45°.
 Lubricating the lock and the latch.

For double leaf doorsets additional controls shall be carried out:
 Verify the functionality of the secondary leaf's rods and lubricate its guide rail.
 Clean the hole of the floor catch set.
 Lubricate the lock and the rod blocking device (top).
 Verify the regular functionality of the closing regulator (arm position perpendicular to the main leaf).
 Lubricate the mobile parts of the closing regulator.

Verify the regular functionality of the doorsets accessories (handle, antipanic bar, overhead doorcloser etc.). Their mobile parts shall be lubricated, too.

In case of irregular functioning of the doorset or its accessories contact an authorized installer or replace the damaged accessories.

N.B. For lubrication use viscous products.

STORAGE INSTRUCTIONS:

It is duty of the company/person taking over the goods to store them in a suitable place so that they will be protected from the natural agents and from the direct sun rays. If during transportation or truck unloading it rains or snows on the goods it is necessary to remove immediately the nylon film from each leaf and frame, put the goods in vertical position to dry them appropriately. In case of external visible defects on doors, they have to be marked in the copy of the transportation document to be returned to the forwarder and notified to the manufacturer by registered mail within 48 hours. We remember that according to our general conditions intrinsic defects have to be notified to the manufacturer within 8 days from the delivery date by registered mail. Goods with defects never have been utilised or assembled, they should be stored at disposal for controls by the manufacturer appointed person.

